

# HUMANITARIAN RESPONSE PLAN UKRAINE

AT A GLANCE

ISSUED ON 25 NOVEMBER 2020

# 2021



## 2021: Needs and requirements

PEOPLE IN NEED

3.4M

PEOPLE TARGETED

1.9M

REQUIREMENTS (US\$)

\$168M

## 2020: A Year of Impact

The humanitarian response remains effective and makes a difference in the lives of conflict-affected people. During the first nine months of 2020, over 1 million people received assistance, more than half of whom were women and close to 10 per cent people with disabilities.

The response to COVID-19 and its related humanitarian consequences has been an integral part of the assistance since the onset of the pandemic in Ukraine. Humanitarian partners have reached more people in areas beyond Government control than in previous years as COVID-19 created opportunities to negotiate greater access.

The Government of Ukraine has taken on the delivery of some services previously supported by humanitarian actors, such as the reconstruction of homes damaged by the conflict. This work will continue in 2021 and beyond to ensure the sustainability of the service provision to people in need.

PEOPLE REACHED

↓ ↓  
1.0M

 Women 0.7M
  Children 0.3M
  People with Disabilities 67K

90% of people receiving assistance were satisfied\*

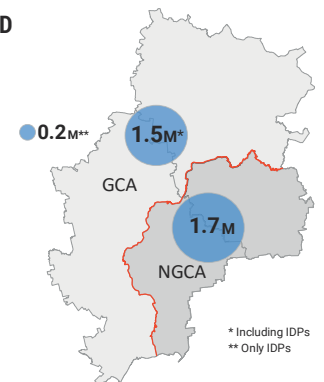
\*According to the Multisectoral Needs Assessment conducted by REACH in GCA in 2020.

## Humanitarian needs overview

With ongoing hostilities and the COVID-19 pandemic exacerbating the dire humanitarian situation in eastern Ukraine, 3.4 million people are projected to be in need of humanitarian assistance in 2021. Although the number of people in need is similar to 2020, their needs are significantly higher in severity. The elderly, people with disabilities, female-headed households and children are among the most vulnerable, including approximately 340,000 internally displaced persons living in undignified conditions.

PEOPLE IN NEED

3.4M



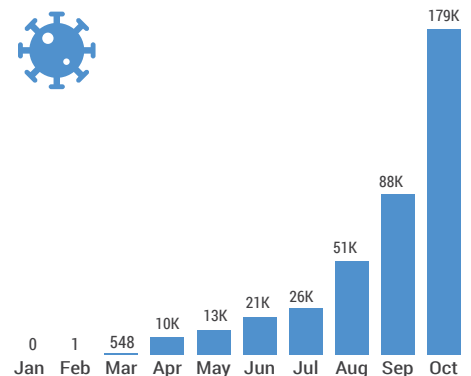
## Trends and challenges

Despite the current ceasefire, the armed conflict is likely to continue but with low intensity. COVID-19 will remain a major factor through at least mid-2021, and the situation is expected to continue to worsen during the winter months. The movement restrictions across the 'contact line' will further increase vulnerabilities, while the situation in areas beyond Government control will be more acute than on the other side.

The 'contact line' is likely to remain substantially closed at least until summer 2021. On a positive note, once the two new crossing points in Luhanska oblast are fully operational, they will bring a long-awaited relief to the communities in the region. People will be able to cross the 'contact line' more swiftly and have better access to a wide range of banking, administrative and medical services.

Also, a gradual progress on new organizations gaining access to operate in areas beyond Government control is likely, especially for COVID-19 response.

MONTHLY NEW CASES OF COVID-19



## Humanitarian requirements

The response will continue to focus on saving lives, ensuring people's access to basic services and strengthening the protection of those affected by the conflict and COVID-19.

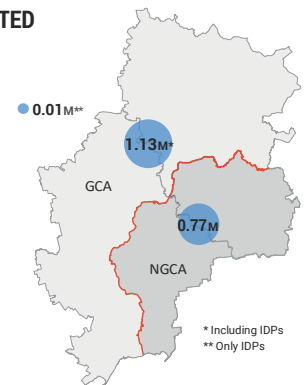
The new Response Plan has a realistic and prioritized approach and takes the capacity and access reality in areas beyond Government control into consideration.

In 2021, over 120 humanitarian partners aim to assist 1.9 million people. The humanitarian response will have a strong advocacy component under the leadership of the Humanitarian Coordinator and requires US\$168 million in 2021.

## PEOPLE TARGETED



1.9M



## Response overview by sector

The response plan of each sector takes into account the COVID-19-related impact on the conflict-affected populations and the operational environment. All interventions are guided by the relevant health and hygiene recommendations to ensure the safety of people receiving and providing assistance.

**Educational interventions** target 105,000 people, 98 per cent of whom are children. In Government-controlled areas, the focus will be on access to quality education and advocacy for the implementation of the Safe Schools Declaration ratified by the Government in November 2019. In areas beyond Government control, the focus will be on equal, non-discriminatory and safe access to education for all children.

**Interventions to improve people's food security and livelihoods (FSL)** target 80,000 people, 41 per cent of whom are elderly. While activities prioritize food assistance and agricultural support, they also aim to restore and strengthen people's livelihoods so they can afford a dignified standard of living.

**Health interventions** target 1.3 million people. The response addresses pre-existing challenges, such as access to health care and quality of medical services, both exacerbated by COVID-19. It also aims to help mitigate the transmission of infectious diseases, including COVID-19.

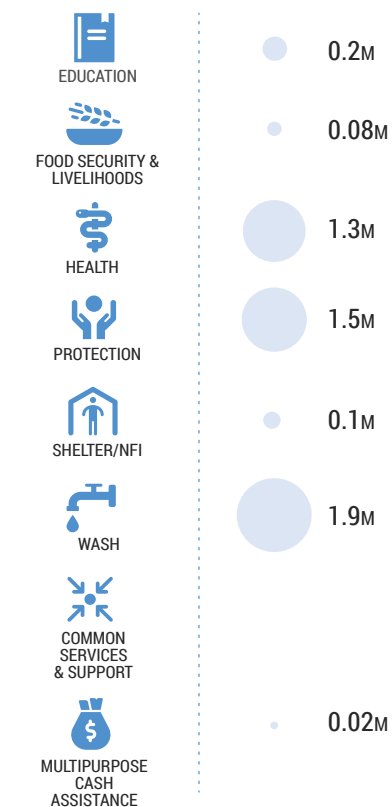
**Interventions in the area of protection** target 1.5 million people, 6 per cent of whom have disabilities. The interventions also include child protection, response to gender-based violence and mine action. They address the acute needs of internally displaced persons in Government-controlled areas and residents of areas beyond Government control who are heavily affected by the closure of crossing points.

**Interventions in the shelter and non-food items sector (Shelter/NFI)** target 117,000 people. As most of the needs in Government-controlled areas are covered by the authorities, residents of areas beyond Government control constitute nearly 70 per cent of the targeted population. The provision of winter assistance is one of the key components and aims to help vulnerable people get by during the cold months of the year.

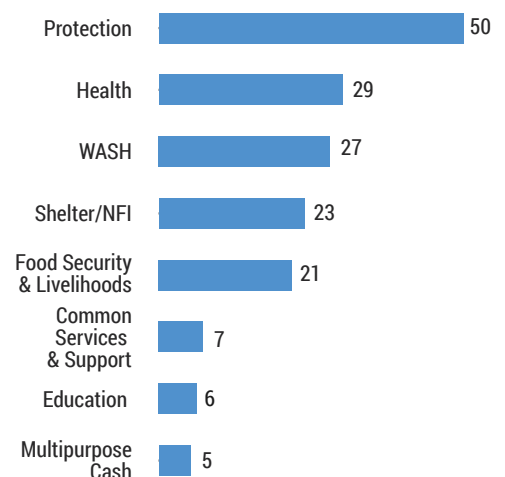
**Interventions in the water, sanitation and hygiene sector (WASH)** target 1.9 million people. Due to the growing risk of COVID-19, hygiene will be a priority with a focus on health facilities, schools, old people's homes among others. The interventions will also aim to move away from short-term solutions and ensure people's access to improved water, sanitation and hygiene services and infrastructure for years to come.

**Programmes providing multipurpose cash assistance (MPC)** target 20,000 people, 13 per cent of whom have disabilities. The cash will help the most vulnerable people meet basic needs.

## PEOPLE TARGETED IN 2021 BY CLUSTER



## FUNDING REQUIREMENT IN 2021 (IN MILLION US\$)



## Women in crisis

Women and girls remain disproportionately affected by the crisis, representing over half of the population in need, some 1.8 million people. Women are more exposed than men to COVID-19-related health risks as four-fifths of all healthcare and social workers in Ukraine are female. Overall, female-headed households are more heavily impacted by the social and economic consequences of the health crisis.

Women represent over 70 per cent of low-income earners in need of social assistance, and are at increased risk of adopting negative coping mechanisms when their access to social benefits is cut off due to COVID-19-related restrictions.

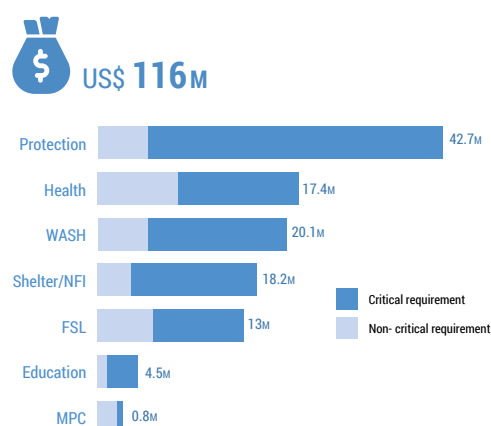
A strong gender lens is applied in the 2021 Humanitarian Response Plan that includes targeted interventions to address the specific needs of women and girls.



## Prioritized humanitarian action

The humanitarian response has been carefully prioritized and targets those most in need. The prioritization process is intended to ensure that the most vulnerable people with the most time critical needs are prioritized for assistance. The critical priority requirements have been identified to help guide donors towards those activities that urgently require funding. Should any major shocks occur during 2021, the Humanitarian Response Plan will be revised in accordance with the reprioritization of emerging needs.

### CRITICAL FINANCIAL REQUIREMENTS BY SECTOR



## Humanitarian-Development Nexus

Recognizing the strong capacity of the Government of Ukraine at all levels, one of the 2021 Humanitarian Response Plan's core objectives is to hand over the service delivery to facilitate the humanitarian exit from Government-controlled areas. This will be done in close collaboration with Government authorities and development actors.

In the meantime, humanitarian actors are here to support the life-saving humanitarian response to ensure that conflict-weary people can live a life with dignity.



## Humanitarian financing

The Ukraine Humanitarian Fund is a tool available to donors to pool their contributions into single, unearmarked funds to support humanitarian efforts in eastern Ukraine.

It enables humanitarian partners to deliver timely, coordinated and principled assistance within the framework of the Humanitarian Response Plans.

